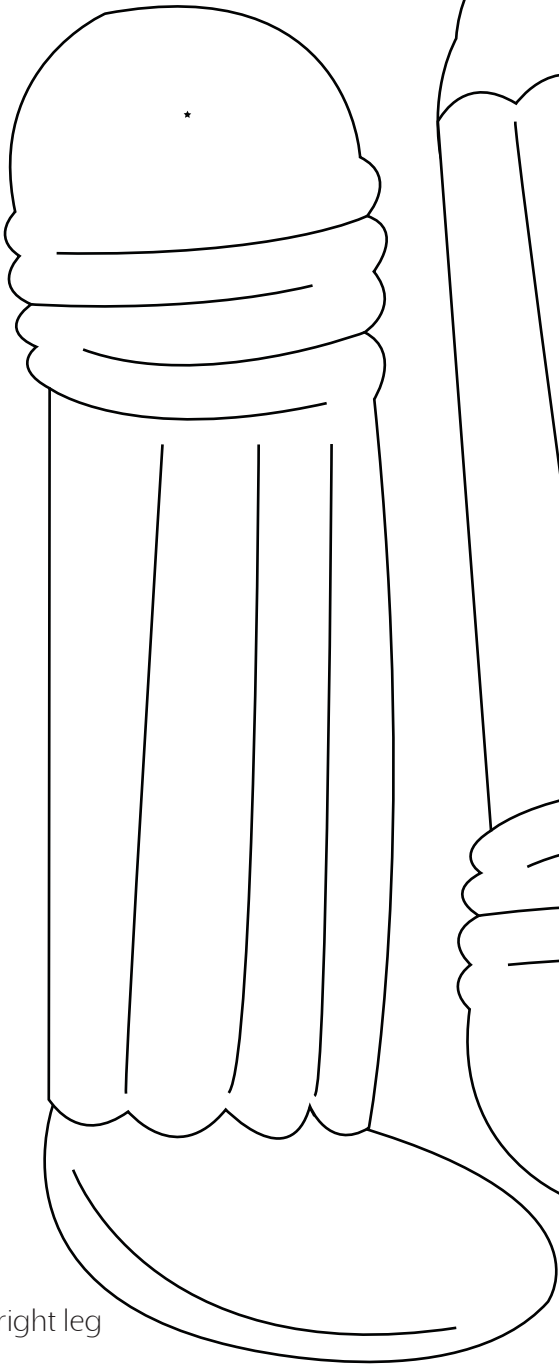
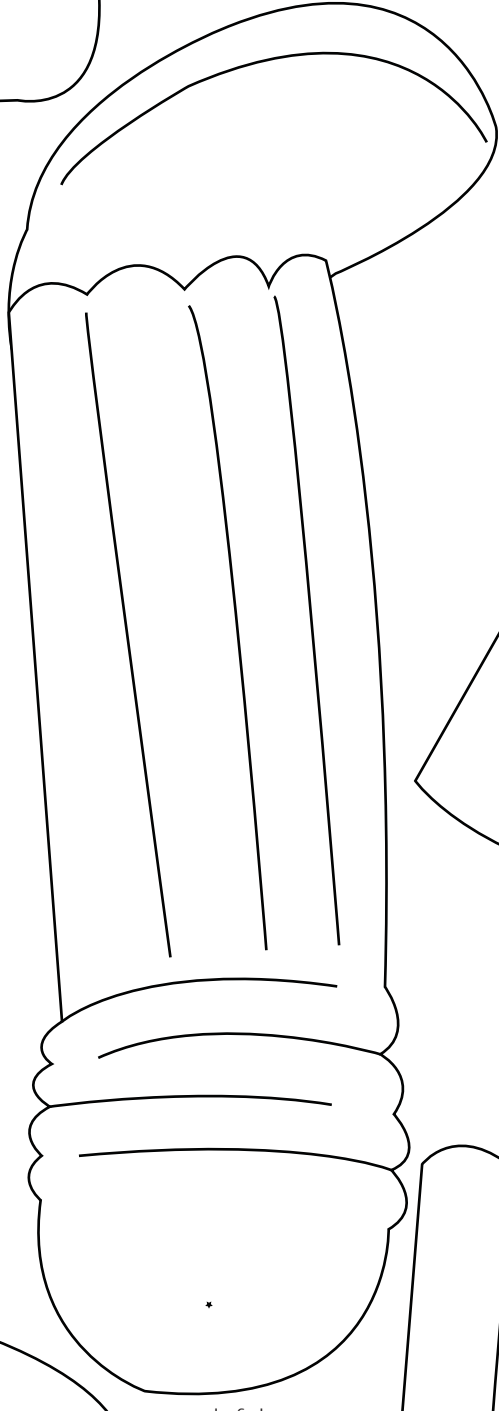


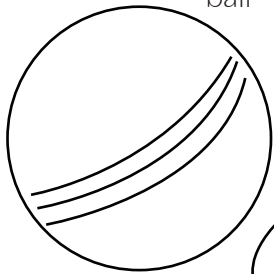
left shoulder



right leg



left leg



ball

AUSSIE legends

SPLIT-PIN CUT OUT STARRING DON BRADMAN

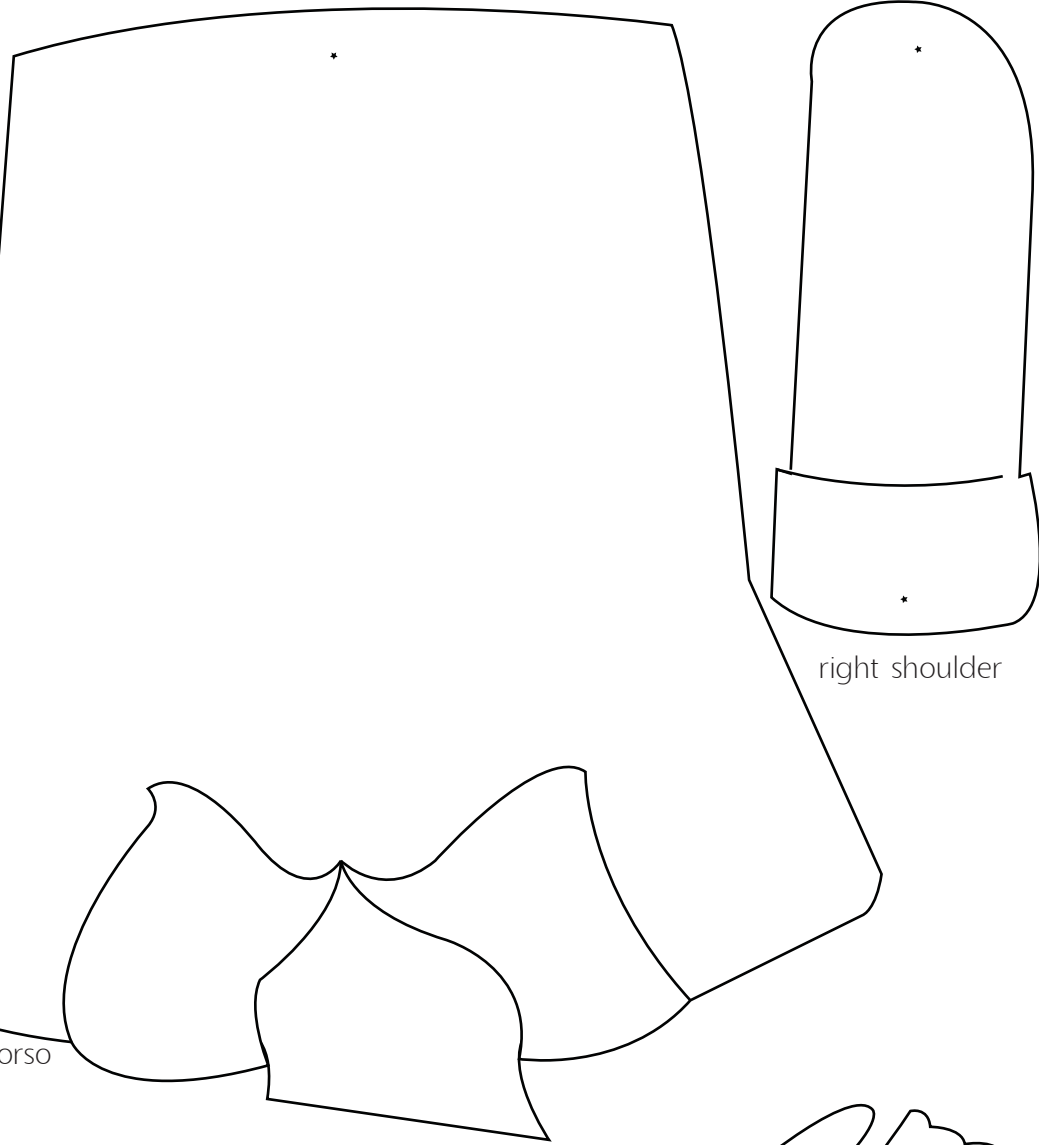
MATERIALS;

- A cup of cold, strong tea or coffee. Or watered down brown paint.
- This template photocopied onto card (not paper)
- Scissors, paintbrushes, crayons/pencils, glue
- 8 Split pins

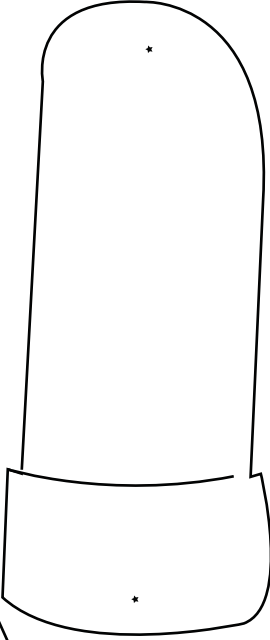
METHOD;

1. Photocopy or trace this template onto A3 card
2. Stain the whole sheet with tea or coffee, splashing some areas with stronger tea.
- Note: If doing this with a class best results will be achieved when students swap parts so a varied tea staining across their character is achieved. The card will become soggy and buckled with too much water so try not to splash it too much.**
3. Cut out the pieces and then colour them in using crayons and pencils.
4. Lay the pieces out so that you can see how they will go
5. Add the split pins where the stars are, joining each piece to each other (an adult may need to punch some holes through the paper with a kebab stick or hole punch for you)
6. Go over the joints and shading as you please-

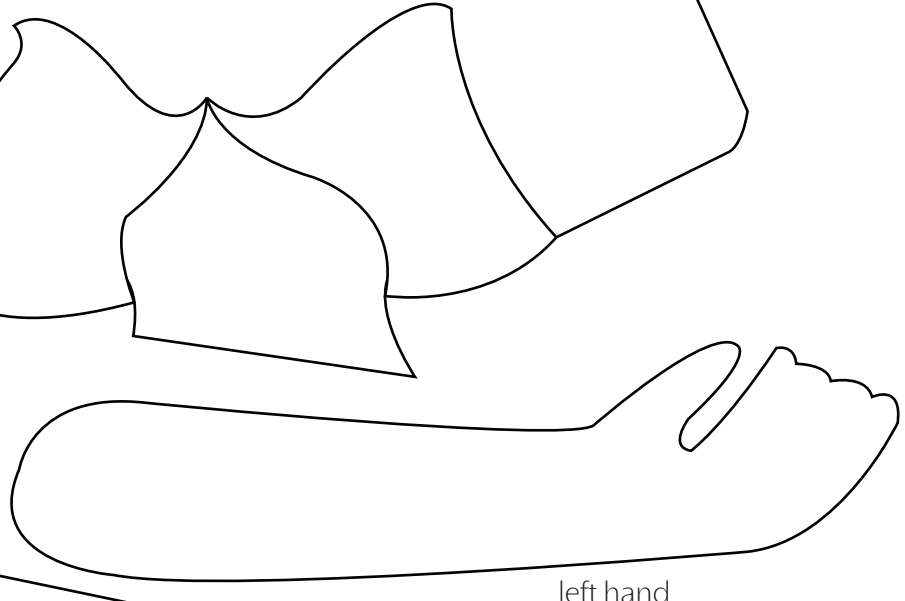
And there you have it!- An Aussie Legends moving character



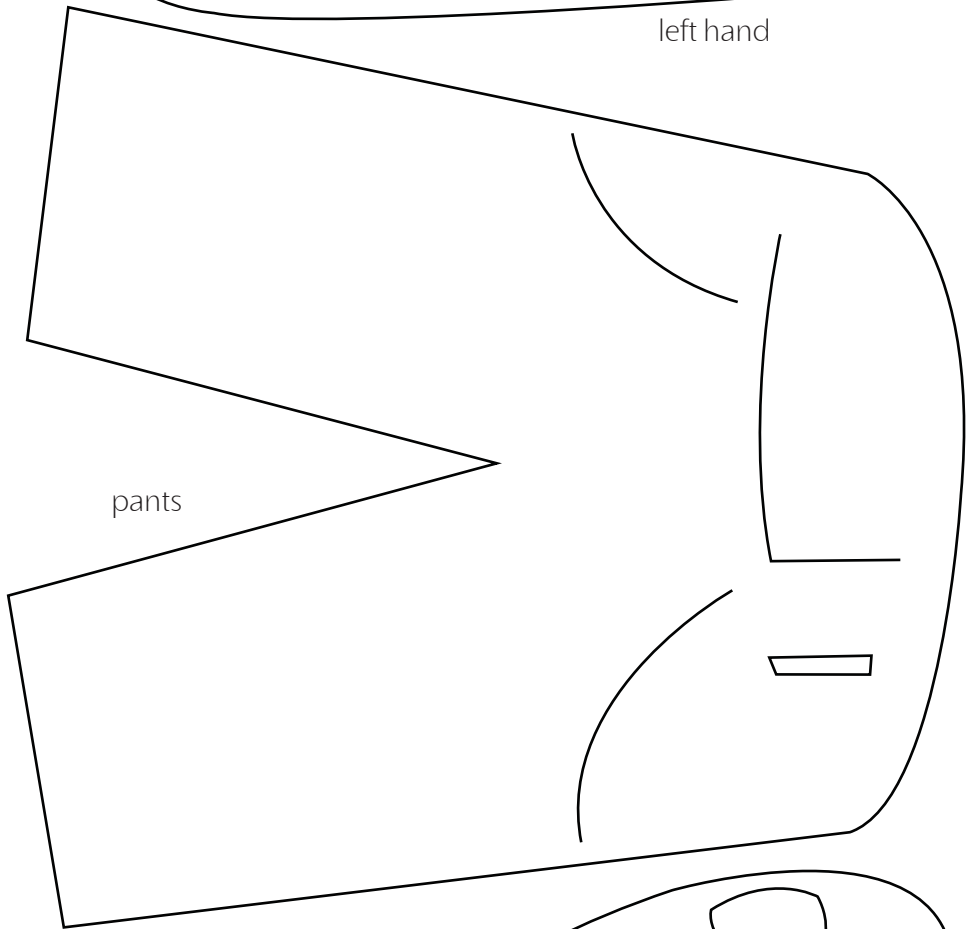
torso



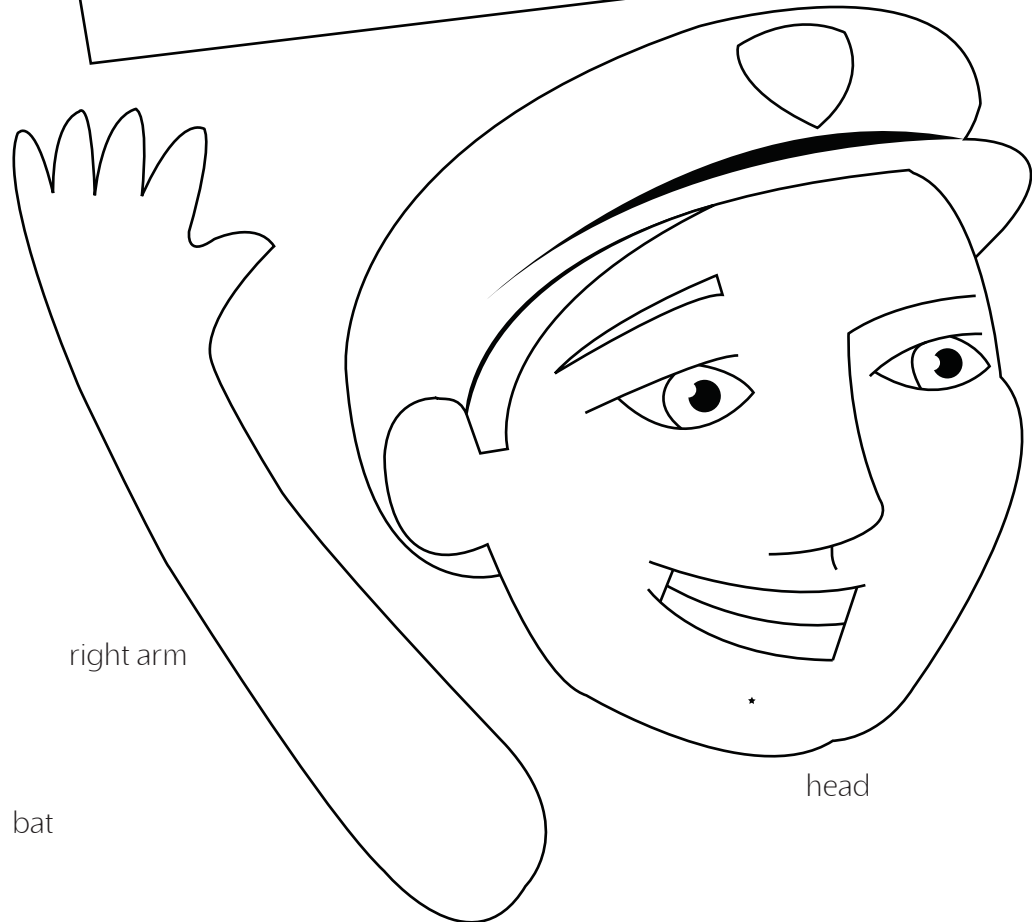
right shoulder



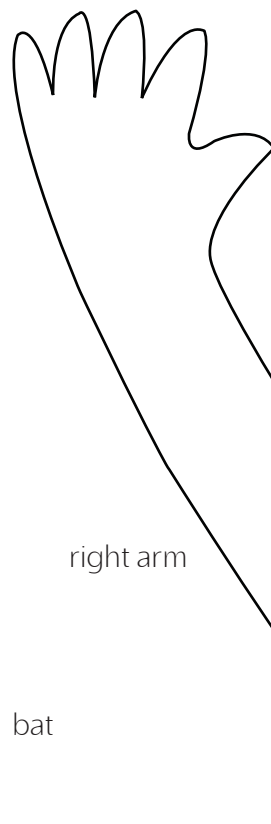
left hand



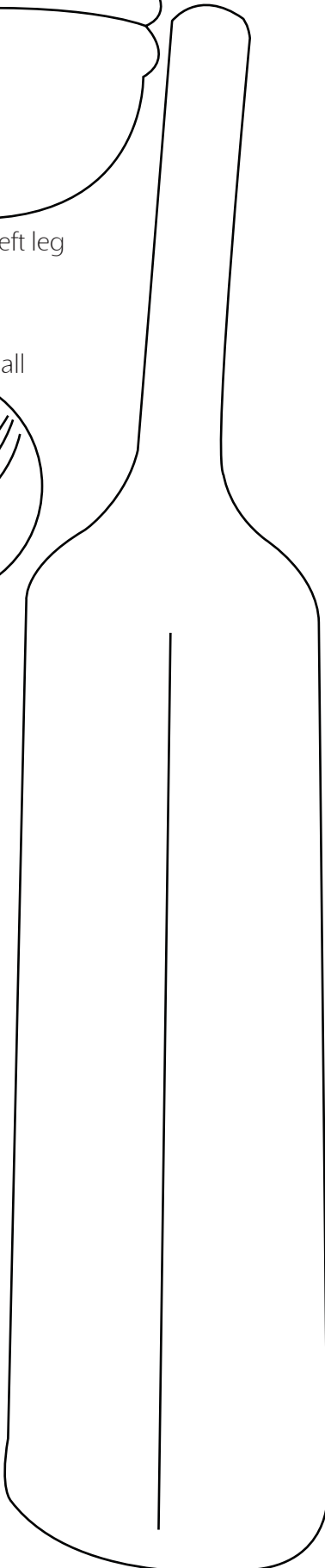
pants



head



right arm



bat